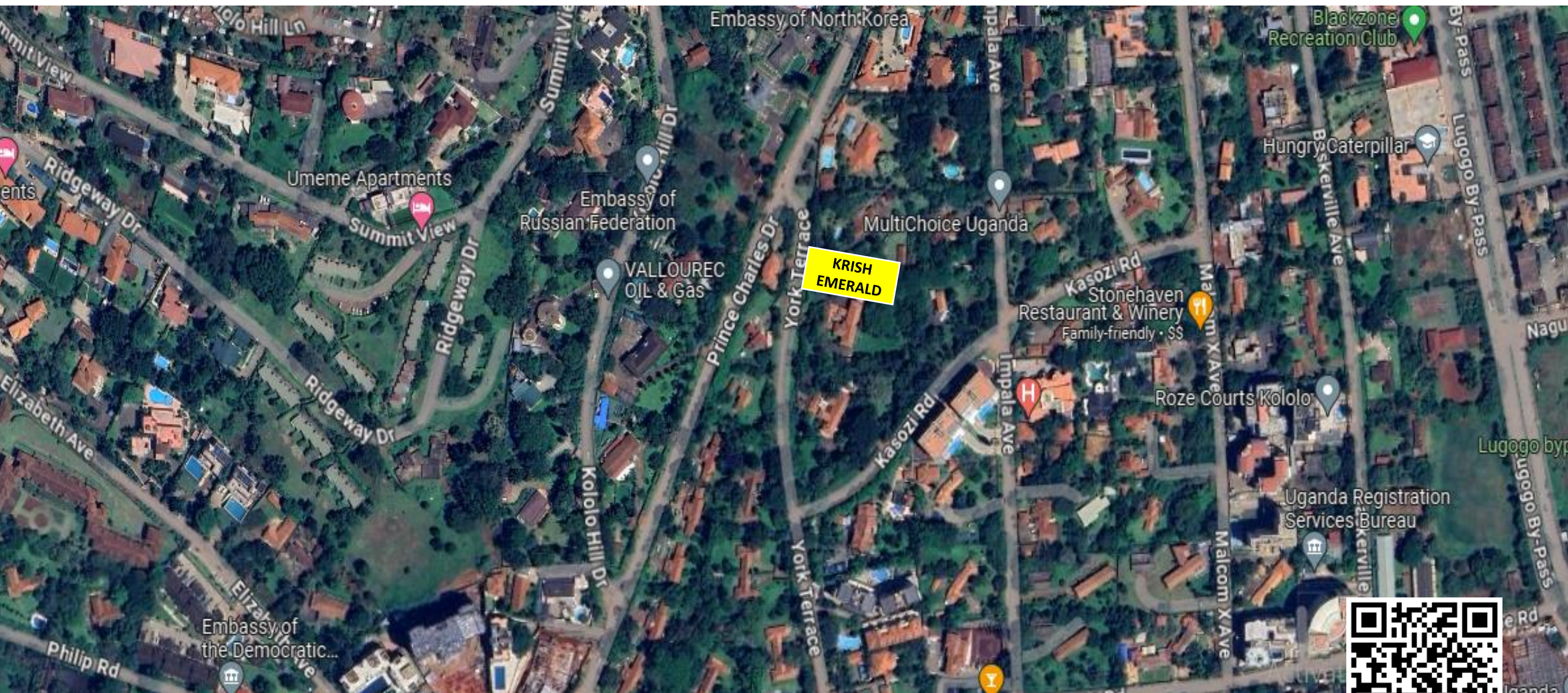



KRISH EMERALD TOWERS

KOLOLO



SITE LOCATION



KRISH EMERALD TOWERS

KOLOLO

This home, it's not an ordinary one. Built on the land known as the heart of Kampala, it is a place where two great block of legacies come together to create the perfect backdrop for you to live and experience your dream and luxurious living.

A home, with modern luxuries, for the connoisseurs. All of which form the perfect canvas for you to live your story.



LUGOGO BYPASS VIEW

EMERALD B

KOLOLO VIEW

EMERALD A

YORK TERRACE

KOLOLO VIEW



Krish Emerald Towers
Site Plan Layout

KRISH EMERALD TOWERS

Located at Plot 4B, York Terrace, Kololo
It has Two Blocks; Emerald A and Emerald B

Emerald A is a 11 story building which has 10 units of 3BHK (+ 1 Maid's Room); 1 unit per floor

Each unit is of approximately 290 Square Meters

Emerald B comprises of 11 Floors with;
10 Units of 3BHK (+ 1 Maid's Room) measuring 185 Square Meters;
18 Units of 3BHK (+ 1 Service Room) measuring 258 Square Meters; and
2 Penthouse Units of 5BHK measuring 467 Square meters with a Personal Terrace of 47 Square Meters





Emerald A
Front View



Emerald A
Side View



Emerald A
Side View



Emerald A
Back View



LEGEND

- 1 Maid's room
- 2 Maid's toilet
- 3 Circulation
- 4 Laundry
- 5 Common toilet
- 6 Kitchen
- 7 Dining
- 8 Living room
- 9 Common Balcony
- 10 Attached toilet Bedroom 1
- 11 Bedroom 1
- 12 Bedroom 1 balcony
- 13 Bedroom 2 balcony
- 14 Bedroom 2
- 15 Attached toilet Bedroom 1
- 16 Master Balcony
- 17 Master Bedroom
- 18 Master toilet
- 19 Walk in closet
- 20 Passage

Emerald A
Typical Floor/
Unit Plan
1st - 10th Floor



LEGEND

- 1 Kitchen
- 2 Store
- 3 Circulation
- 4 Ladies WC
- 5 Gents WC
- 6 Bar
- 7 Terrace

Emerald A
Typical Floor/
Unit Plan
11th Floor



Emerald B
Side View



Emerald B
Back View



Emerald B
Side View



Emerald B
Side View



Emerald B
Typical Floor/ Unit
Plan
1st - 9th Floor



Emerald B
Typical Floor/ Unit
Plan
10th Floor



Emerald B
Typical Floor/ Unit
Plan
11th Floor



LEGEND

- 1 Master Balcony
- 2 Master Bedroom
- 3 Master toilet
- 4 Bedroom 1
- 5 Attached toilet Bedroom 1
- 6 Bedroom 2 balcony
- 7 Bedroom 2
- 8 Attached toilet Bedroom 2
- 9 Common toilet
- 10 Kitchen
- 11 Service room
- 12 Living room
- 13 Common Balcony
- 14 Family room
- 15 Dining

Emerald B
Typical Unit 1
and Unit 2 Floor
Plan



LEGEND

- 1 Common Balcony
- 2 Living room
- 3 Dining
- 4 Kitchen
- 5 Maid's room
- 6 Maid's toilet
- 7 Master toilet
- 8 Master Bedroom
- 9 Master balcony
- 10 Passage
- 11 Attached toilet Bedroom 1
- 12 Common toilet
- 13 Bedroom 1
- 14 Bedroom 2
- 15 Attached toilet Bedroom 2

Emerald B
Typical Unit 3
Floor Plan



LEGEND

- 1 Master Bedroom
- 2 Bedroom 1
- 3 Attached toilet Bedroom 1
- 4 Bedroom 2
- 5 Attached toilet Bedroom 2
- 6 Bedroom 3 balcony
- 7 Bedroom 3
- 8 Attached toilet Bedroom 3
- 9 Common toilet
- 10 Kitchen
- 11 Service room
- 12 Living room
- 13 Common Balcony
- 14 Family room
- 15 Dining

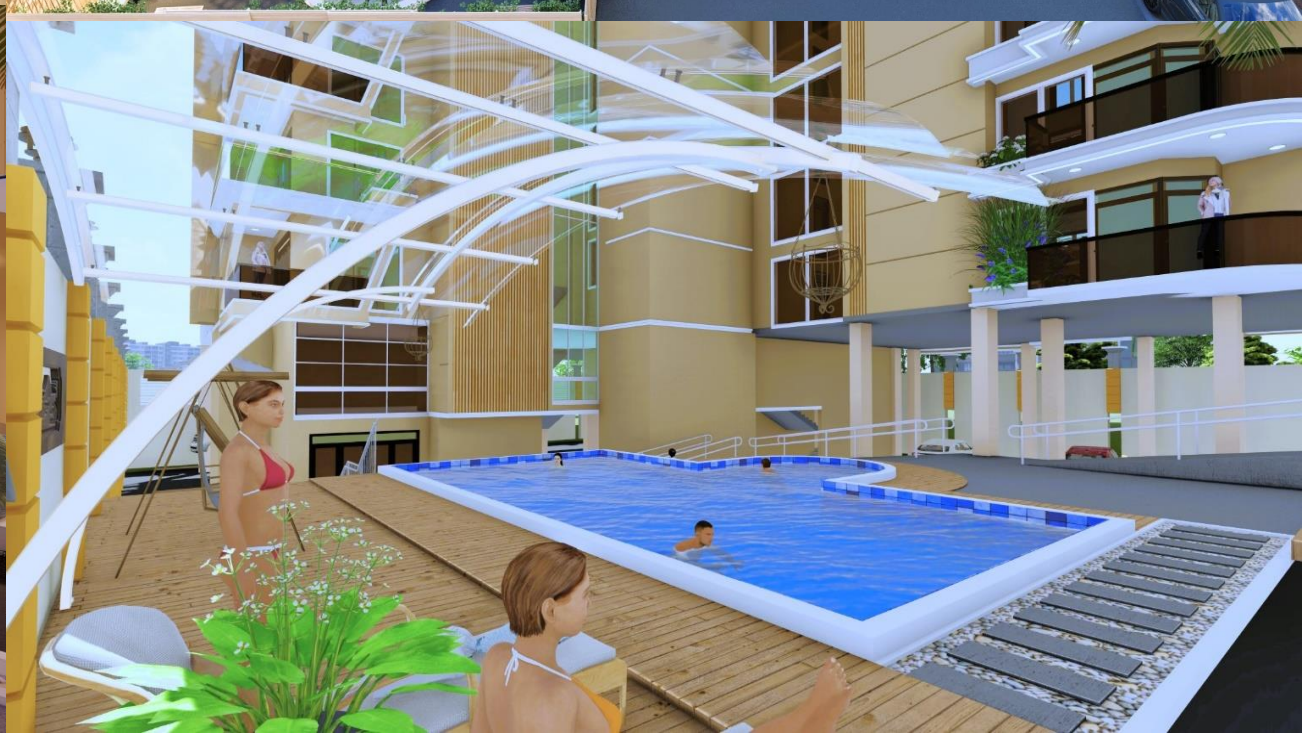
Emerald B
Typical Floor
Plan Penthouse
Lower Level



LEGEND

- 1 Balcony Bedroom 4
- 2 Bedroom 4
- 3 Attached toilet Bedroom 4
- 4 Family room
- 5 Terrace
- 6 Walk in closet
- 7 Master toilet
- 8 Master Bedroom
- 9 Master Balcony

Emerald B
Typical Floor
Plan Penthouse
Upper Level



AMENITIES

Re-creational Areas which includes; Outdoor Sitting Area, Gym, Bar, Restaurant, Swimming Pool
Free Membership of the above to the Owners and Tenants

Silent Back-up Generators for the Building and Lifts

Each Apartment unit has a sub meter for the power consumed from the Generator

24 x 7 CCTV Cameras, Electric Fences on the
Compound Walls and an Operational Control Room

Biometrics Security at your Apartment Unit
Main Door such as Fingerprint Lock Systems

Double Glazed Aluminum Windows which are Sound
Proof that eliminate Sound in your Apartment Unit

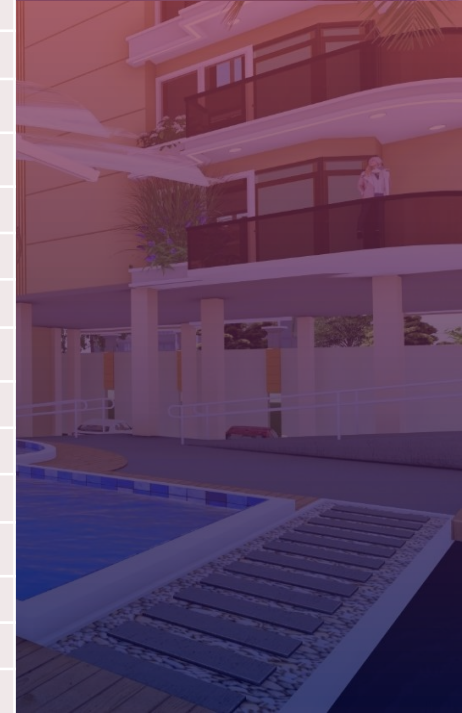
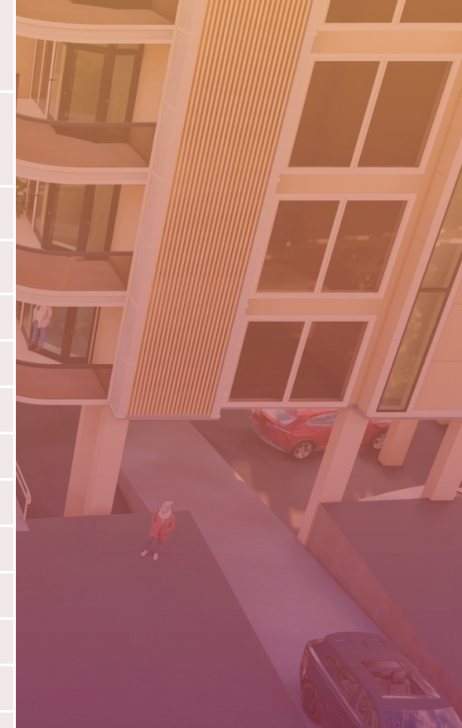
Fire Fighting Equipment's
to cover fire outrages

Automated RFID Parking System, Ample and Spacious Parking with Allotted
Parking Space and Double Height Parking Levels (Hydraulic Parking).



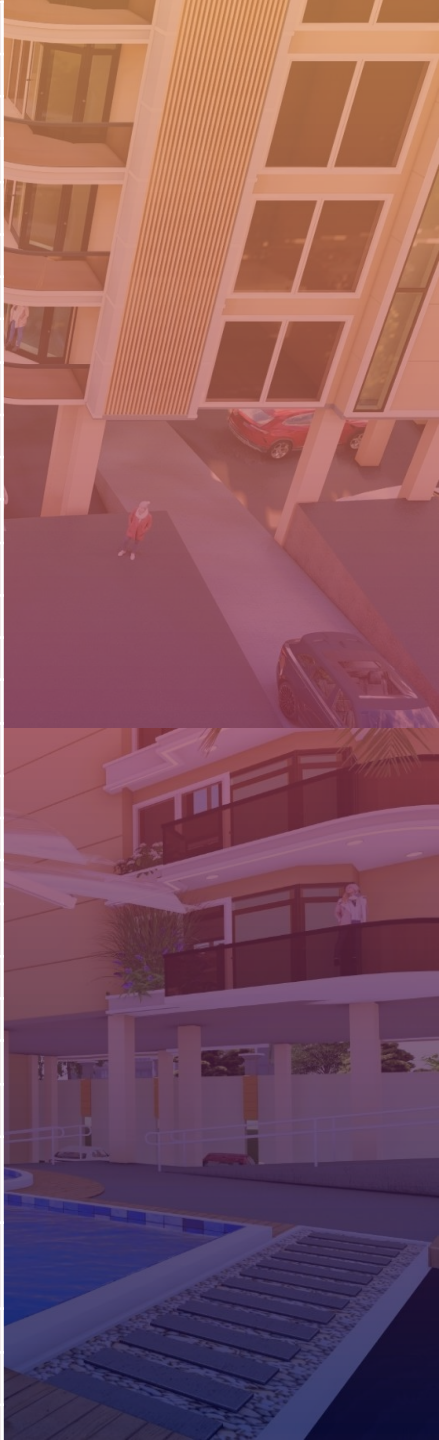
KRISH EMERALD TOWERS PRICE LIST

UNIT NO.	FACING	NO. OF BED ROOMS	SQM	UNIT PRICE \$ PER SQM	TOTAL PRICE \$	BOOKED
EMERALD A						
1st to 10th Floor						
1A	Front	3 + 1 (Maid's Room)	290	\$ 1,500	\$ 435,000	BOOKED
2A	Front	3 + 1 (Maid's Room)	290	\$ 1,500	\$ 435,000	
3A	Front	3 + 1 (Maid's Room)	290	\$ 1,500	\$ 435,000	
4A	Front	3 + 1 (Maid's Room)	290	\$ 1,500	\$ 435,000	
5A	Front	3 + 1 (Maid's Room)	290	\$ 1,550	\$ 449,500	
6A	Front	3 + 1 (Maid's Room)	290	\$ 1,550	\$ 449,500	
7A	Front	3 + 1 (Maid's Room)	290	\$ 1,550	\$ 449,500	
8A	Front	3 + 1 (Maid's Room)	290	\$ 1,600	\$ 464,000	
9A	Front	3 + 1 (Maid's Room)	290	\$ 1,600	\$ 464,000	
10A	Front	3 + 1 (Maid's Room)	290	\$ 1,600	\$ 464,000	
EMERALD B						
1st Floor						
0 1B	Front	3 + 1 (Maid's Room)	258	\$ 1,500	\$ 387,000	BOOKED.
0 2B	Front	3 + 1 (Maid's Room)	258	\$ 1,500	\$ 387,000	
0 3B	Rear	3 + 1 (Maid's Room)	185	\$ 1,500	\$ 277,500	
2nd Floor						
0 1B	Front	3 + 1 (Maid's Room)	258	\$ 1,500	\$ 387,000	BOOKED.
0 2B	Front	3 + 1 (Maid's Room)	258	\$ 1,500	\$ 387,000	
0 3B	Rear	3 + 1 (Maid's Room)	185	\$ 1,500	\$ 277,500	
3rd Floor						
0 1B	Front	3 + 1 (Maid's Room)	258	\$ 1,500	\$ 387,000	BOOKED.
0 2B	Front	3 + 1 (Maid's Room)	258	\$ 1,500	\$ 387,000	
0 3B	Rear	3 + 1 (Maid's Room)	185	\$ 1,500	\$ 277,500	





4th Floor						
0 1B	Front	3 + 1 (Maid's Room)	258	\$ 1,550	\$ 399,900	BOOKED.
0 2B	Front	3 + 1 (Maid's Room)	258	\$ 1,550	\$ 399,900	
0 3B	Rear	3 + 1 (Maid's Room)	185	\$ 1,550	\$ 286,750	
5th Floor						
0 1B	Front	3 + 1 (Maid's Room)	258	\$ 1,550	\$ 399,900	BOOKED.
0 2B	Front	3 + 1 (Maid's Room)	258	\$ 1,550	\$ 399,900	
0 3B	Rear	3 + 1 (Maid's Room)	185	\$ 1,550	\$ 286,750	
6th Floor						
0 1B	Front	3 + 1 (Maid's Room)	258	\$ 1,550	\$ 399,900	BOOKED.
0 2B	Front	3 + 1 (Maid's Room)	258	\$ 1,550	\$ 399,900	
0 3B	Rear	3 + 1 (Maid's Room)	185	\$ 1,550	\$ 286,750	
7th Floor						
0 1B	Front	3 + 1 (Maid's Room)	258	\$ 1,600	\$ 412,800	BOOKED.
0 2B	Front	3 + 1 (Maid's Room)	258	\$ 1,600	\$ 412,800	
0 3B	Rear	3 + 1 (Maid's Room)	185	\$ 1,600	\$ 296,000	
8th Floor						
0 1B	Front	3 + 1 (Maid's Room)	258	\$ 1,600	\$ 412,800	BOOKED.
0 2B	Front	3 + 1 (Maid's Room)	258	\$ 1,600	\$ 412,800	
0 3B	Rear	3 + 1 (Maid's Room)	185	\$ 1,600	\$ 296,000	
9th Floor						
0 1B	Front	3 + 1 (Maid's Room)	258	\$ 1,600	\$ 412,800	BOOKED.
0 2B	Front	3 + 1 (Maid's Room)	258	\$ 1,600	\$ 412,800	
0 3B	Rear	3 + 1 (Maid's Room)	185	\$ 1,600	\$ 296,000	
10th Floor						
0 1B (PH)	Front	4 + 1 (Maid's Room)	467	\$ 1,600	\$ 767,200	BOOKED
		Personal Terrace	47			
0 2B (PH)	Front	4 + 1 (Maid's Room)	467	\$ 1,600	\$ 767,200	BOOKED
		Personal Terrace	47			
0 3B	Rear	3 + 1 (Maid's Room)	185	\$ 1,600	\$ 296,000	BOOKED.
11th Floor						
0 3B	Re-creational Area (Gym and Common Terrace)					





KRISH EMERALD TOWERS



KRISH GROUP OF COMPANIES
102, Kailash Apartments,
Opposite Village Mall,
Bugolobi - Kampala



+256 701 292 556
+256 783 572 335



www.krishgroupuganda.com
krishgroup7@gmail.com